



6D-BUILDTECH

Value Proposition

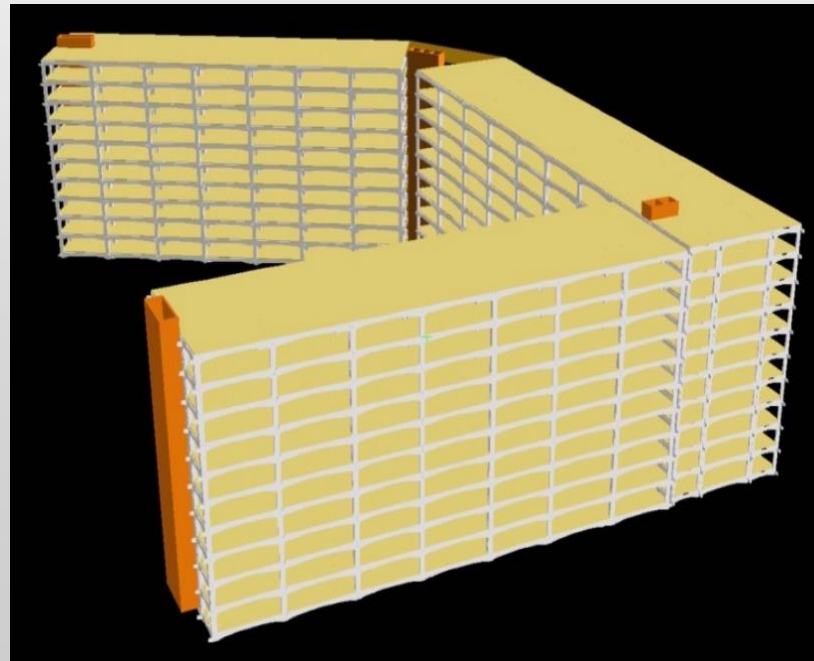
6D-BuildTech BUILDING SYSTEMS

Whatever the need, we have the solution

Villa & Town house



Low to Mid rise apartments



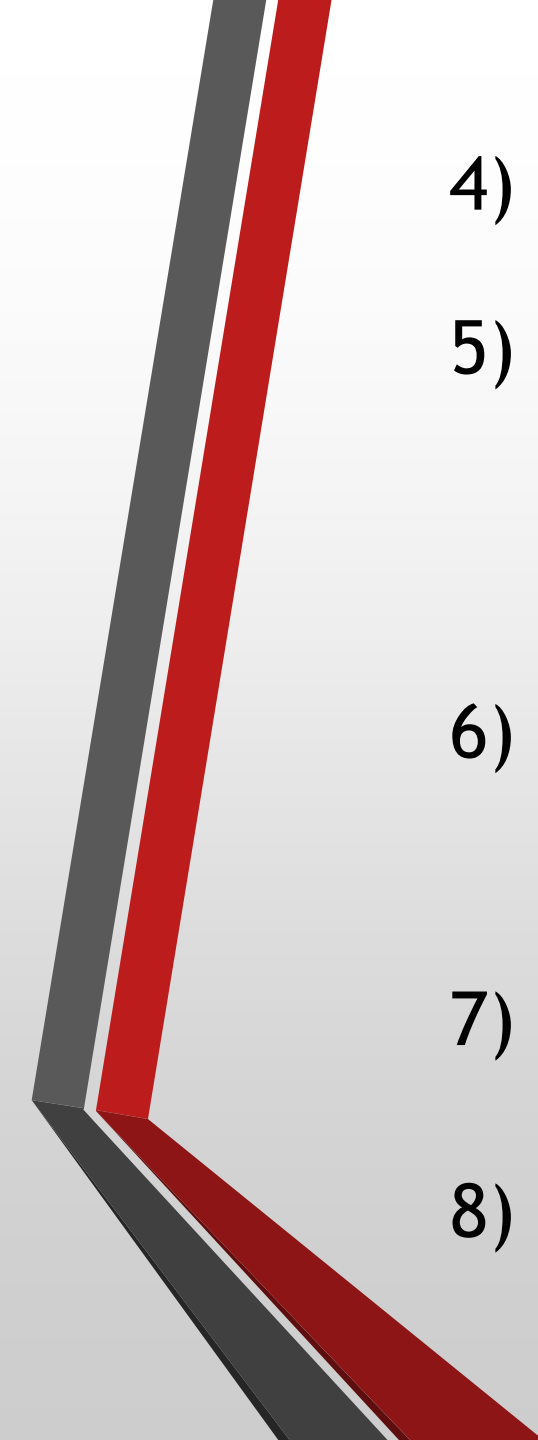
High rise blocks





Value Proposition

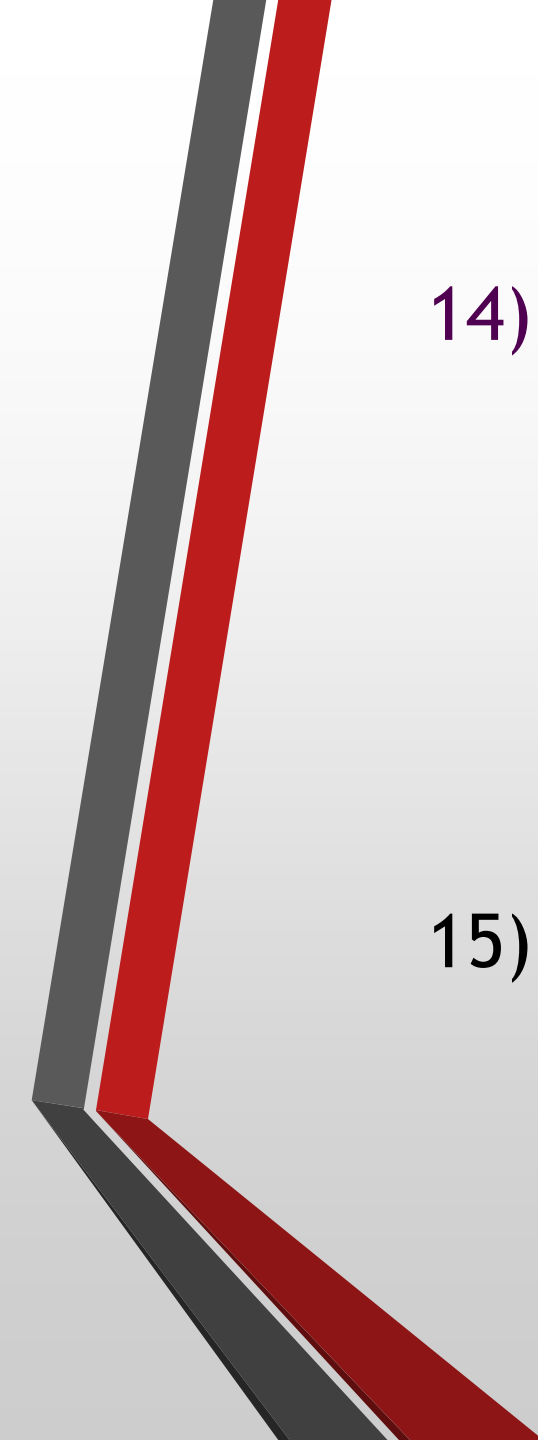
Overall value includes;


- 1) Our building life is at least four times longer than that of conventional housing.
- 2) Five times faster and safer to erect, eliminates shoring and drastically reduces on-site formwork.
- 3) 15 to 20% lower cost and much higher quality.

- 
- 4) 60 to 70% less labor required.
 - 5) 10%-30% less materials (concrete and steel). Block-outs for MEP and door and window frames can be added during manufacturing.
 - 6) Captures quality and labor efficiency in a controlled factory setting.
 - 7) Eliminates job site waste.
 - 8) Environmentally compliant - sustainable.

- 
- 9) Reduction of overall energy consumption. Continuous insulation available - 100% insulated building envelope.
 - 10) Provides engineering flexibility to resist seismic hydraulic forces, typhoon/hurricane wind loads and other extreme environmental conditions.
 - 11) **6D-BuildTech** has developed technology that will revolutionize building construction.

- 
- 12) Each **6D-BuildTech** factory will employ around 500 workers and becomes a strong influence of the local economy wherever we locate.
 - 13) Employees who complete our internal apprenticeship program will be eligible for German Apprenticeship Program Certification. We don't just provide jobs, we provide careers.


- 
- 14) Factory Financing - a standard **6D-BuildTech** Factory translates into about \$60 million total capex investment. This factory will produce components to produce buildings with about 1,000 m² of floor space per day. That is about 360,000 m² of built-up-area annually. Factories are scalable to trade areas.
 - 15) **6D-BuildTech** will make a significant contribution to the local economy where we locate.



16) Factory sizing to project- Obviously, it is not a “one size fits all” world in terms of factory capacity to accommodate various projects. Large projects will require more than a single factory to construct. The standard full size of **6D-BuildTech** factory produces building system components to construct about 360,000 m² of floor space annually (1,000 m² per day).


We address this issue by asking two questions:

- (1) what is the total built up area for floor space in the entire project?
- (2) how fast do you want it constructed?

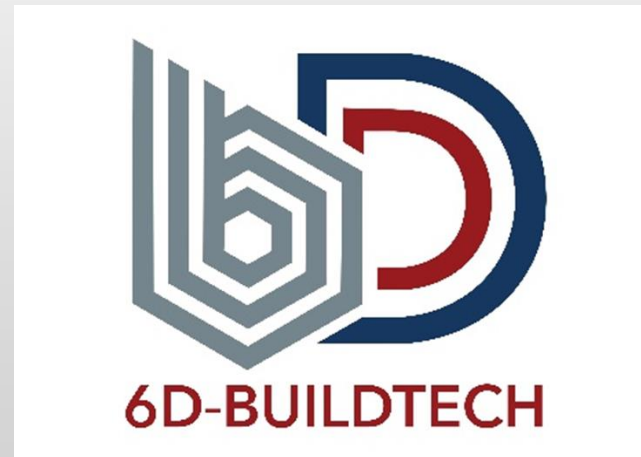


Let's assume we want to construct 10,000 residential units each unit having 250 m² floor space per unit. That's a total floor space of 2.5 million m². So, utilizing one factory, it would require 6.9 years to construct the project, two factories could do the project in 3.45 years and so on...

Of course, you have other requirements than just building construction, streets, lighting, sewage, other services, etc. But the process is pretty simple arithmetic.

- 
- **The basic building component systems are flexible, we use load bearing walls for structures up to 15 stories and the Space Frame system which is the only precast system in the world that can be used to construct 100 story buildings.**

- No one can match the speed of construction, quality and price of **6D-BuildTech Technology.**



- 
- **Concrete building construction is a \$2.5 trillion annual market space that is global in nature.**

Currently precast buildings account for less than 15% of the concrete building market space.

We believe that performance of our innovative building systems will allow us to compete in up to 80% of this segment.



Humans are Distinguished from Other Species by our Ability to Work Miracles

- We call these miracles *technology*
- Technology is miraculous because it allows us to do more with less
- New technologies define the Future



Globalization = Horizontal Progress

- **Taking things that work in one place and making them work in another place**



Technology = Vertical Progress

- Doing new things...



Most People Think the Future of the World will be Defined by Globalization

- **The truth is that technology matters more....**



“Businesses do not compete against one another, they all compete against the future.”